

XP6-MA

Six Zone Interface Module



Intelligent/Addressable Devices

General

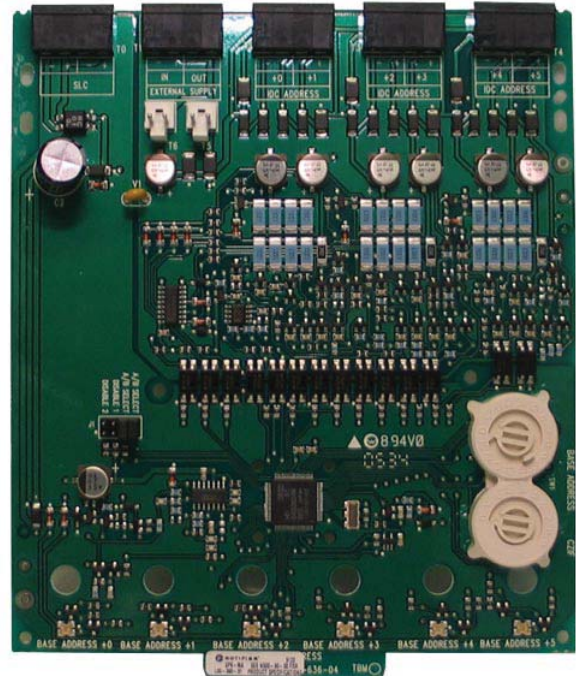
Notifier's XP6-MA six-zone interface module provides an interface between the intelligent alarm system and a two-wire conventional detection zone. A common SLC input is used for all modules, and the initiating device circuits share a common external supervisory supply and ground. Otherwise, each module operates independently from the others.

The first module is addressed from 01 to 154 while the remaining modules are automatically assigned to the next five higher addresses. Provisions are included for disabling a maximum of two unused modules. The XP6-MA transmits the status of a zone of two-wire detectors to the fire alarm control panel. Status conditions are reported as normal, open, or alarm. The interface module supervises the zone of detectors and the connection of the external power supply.

Each XP6-MA module has panel-controlled bicolor LED indicators. The panel can cause the LEDs to blink, latch on, or latch off.

Features

- Six addressable initiating device circuits.
- Removable 0.75 mm² to 1.5 mm² plug-in terminal blocks.
- Status indicators for each point.
- Unused addresses may be disabled (up to 2).
- Rotary address switches.
- FlashScan® or CLIP operation.
- Mounting hardware included.



Approvals

CSIRO ActivFire listed for use with Notifier AFP-2800 Fire Indicator Panels in afp - 1459.

Specifications

Standby Current:	2.20 mA (SLC current draw with all addresses used; if some addresses are disabled, the standby current decreases).
Alarm Current:	40 mA (assumes all six LEDs solid ON).
Temperature Range:	-10°C to +55°C
Humidity:	10% to 93% noncondensing
Dimensions:	172.72 mm high x147.32 mm wide x 31.75 mm deep.
Wire gauge:	0.75 mm ² to 1.5 mm ² .
Maximum SLC Wiring Resistance:	40 or 50 ohms, panel dependent.
Maximum IDC Wiring Resistance:	25 ohms.
External Supply Voltage:	External supply voltage: DC voltage: 18 – 28 volts power limited. Ripple voltage: 0.1 Vrms maximum. External supply current: 90 mA maximum per address in alarm.

© 2009 by Honeywell International Inc. All rights reserved.
Unauthorised use of this document is strictly prohibited.

This document is not intended for installation purposes.
We try to keep our product information up-to-date and accurate.
We cannot cover all specific applications or anticipate all requirements.
All specifications are subject to change without notice.

For more information contact your nearest Notifier Sales Office or Distributor
www.notifier.com.au