

XP6-R

Six Relay Control Module



Intelligent/Addressable Devices

General

Notifier's XP6-R six-relay control module provides an intelligent alarm system with six Form-C relays.

The first module is addressed from 01 to 154 while the remaining modules are automatically assigned to the next five higher addresses.

Provisions are included for disabling a maximum of three unused modules.

A single isolated set of dry relay contacts is provided for each module address, which is capable of being wired for either a normally-open or normally-closed operation.

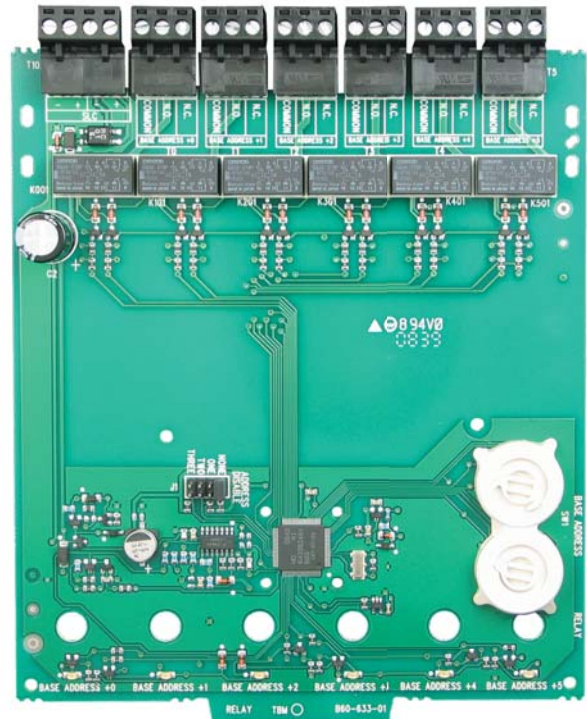
The module allows the control panel to switch these contacts on command. No supervision is provided for the controlled circuit.

Each XP6-R module has panel-controlled green LED indicators. The panel can cause the LEDs to blink, latch on, or latch off.

To ensure proper operation this module must be connected to a compatible Notifier Fire Indicator Panel.

Features

- Six addressable Form-C relay contacts.
- Removable 0.75 mm² to 1.5 mm² plug-in terminal blocks.
- Status indicators for each point.
- A maximum of three unused addresses may be disabled,



- Rotary address switches.
- FlashScan® or CLIP operation.
- Mounting hardware included.

Approvals

CSIRO ActivFire listed for use with Notifier AFP-2800 Fire Indicator Panels in afp - 1459.

Specifications

| | |
|---------------------------------------|---|
| Standby current: | 1.45 mA (SLC current draw with all addresses used; if some addresses are disabled, the standby current decreases). |
| Alarm current: | 32 mA (assumes all six relays have been switched once and all six LEDs solid ON). |
| Temperature range: | 0°C to 49°C. |
| Humidity: | 10% to 85% noncondensing. |
| Dimensions: | 172.72 mm high x 147.32 mm wide x 25.40 mm deep. |
| Wire gauge: | 0.75 mm ²) to 1.5 mm ² . |
| Maximum SLC wiring resistance: | 40 or 50 ohms, panel dependent. |
| Maximum IDC wiring resistance: | 40 ohms. |
| Relay current: | 30 mA/relay pulse (15.6 ms pulse duration), pulse under panel control. |
| Relay contact ratings: | 30 VDC; 70.7 VAC |
| Current ratings: | 3.0 A @ 30 VDC maximum, resistive, non-coded. 2.0 A @ 30 VDC maximum, resistive, coded. 1.0 A @ 30 VDC maximum, inductive (L/R = 2 ms), coded 0.5 A @ 30 VDC maximum, inductive(L/R = 5 ms), coded 0.9 A @ 110 VDC maximum, resistive, non-coded. 0.9 A @ 125 VAC maximum, resistive, non-coded. 0.7 A @ 70.7 VAC maximum, inductive (PF = 0.35), non-coded. 0.5 A @ 125 VAC maximum, inductive (PF = 0.35), non-coded.. |

© 2009 by Honeywell International Inc. All rights reserved.
Unauthorised use of this document is strictly prohibited.

This document is not intended for installation purposes.
We try to keep our product information up-to-date and accurate.
We cannot cover all specific applications or anticipate all requirements.
All specifications are subject to change without notice.

For more information contact your nearest Notifier Sales Office or Distributor
www.notifier.com.au