

# Xtralis VESDA Display Modules



Display modules provide real-time indication of the status of a Xtralis VESDA detector. They have a 20-segment vertical bar graph display, a 2 digit numeric display, an audible sounder, clear alarm and fault indicators. They also have 4 push button keys to control the detector and the mode of the display.

The Display Module can be mounted into a detector unit, a remote mounting box or a 19in sub rack. Several displays can be configured to display information from a single detector in multiple locations.

## Description

There are various versions of the display module depending on the type of detector and the relay configuration required. The Xtralis VESDA VLS display has a fourth mode for the Numerical Display which shows the First Alarm Sector (FAS), this being the number of the sector (pipe) that has detected smoke. For the Xtralis VESDA VLC the Fire 2 LED is omitted.

## Smoke Indication

Smoke levels are continuously shown on a bar graph display where each illuminated segment indicates the current level of detected smoke.

The top segment of the bar graph indicates the Fire 1 smoke threshold level and each segment below that level represents 1/20 of the Fire 1 smoke threshold level.

To the left of the bar graph are the Fire 1, Action and Alert smoke threshold indicators. At a glance these provide a visual representation of the programmable alarm thresholds showing how close the smoke level is to triggering the next level of alarm.

## Status Lights

High intensity flashing LEDs provide a clear indication of the fire condition and are accompanied by an audible warning appropriate to the alarm condition. Similarly, any fault condition is indicated by a series of LEDs and an audible tone providing a comprehensive range of status information. The audible warning is easily silenced by pressing the Silence button at which point any flashing LEDs are illuminated until the cause of the event is identified, rectified and the system reset.

## Numeric Display

A 2 digit numerical readout has a number of modes that are indicated by up to four LEDs:

- The current smoke level in % obscuration/m (% obscuration/ft)
- Fire 1 threshold in % obscuration/m (% obscuration/ft). This is the sensitivity of the detector.

- The VESDA zone number
- First Alarm Sector on the VLS display - the numeric readout shows the sector (pipe) number that has detected smoke.

## Push Button Keys

Four large tactile push button keys enable users to reset, isolate or silence the detector and control the mode of the display module. The buttons can be disabled to prevent operation of its functions.

A lamp test routine is initiated by pressing the Mode key for two seconds. A Manual Scan can be initiated on the VLS by holding the Silence button for 2 seconds.

## Features

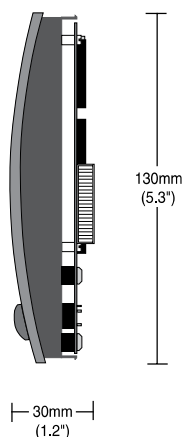
- Provides Immediate Status Reporting for a Single VESDA Zone
- Allows Zone Control of Assigned Xtralis VESDA Detector
- High Intensity Alarm LEDs
- Remote Relay Option
- 20-Segment Vertical Bar Graph Display
- Alarm Threshold Indicators
- Built-In Sounder for Audible Warning
- Comprehensive Fault Reporting
- Multi-mode Numeric Display (defaults to smoke obscuration)
- Recessed Mounting Option

## Listings/Approvals

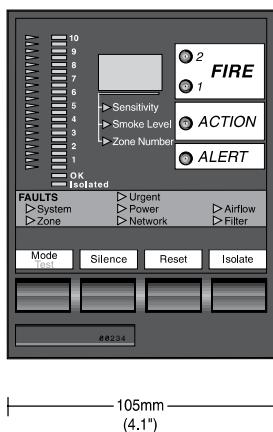
- UL
- ULC
- FM
- LPCB
- VdS
- ActivFire

# Xtralis VESDA Display Modules

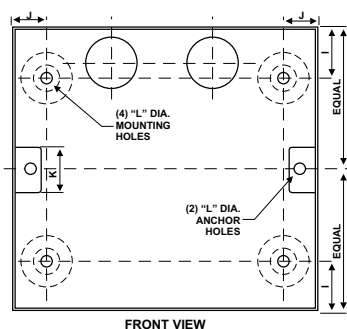
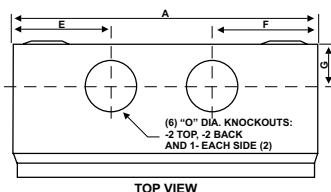
## Display Module (side view)



## Display Module (front view)

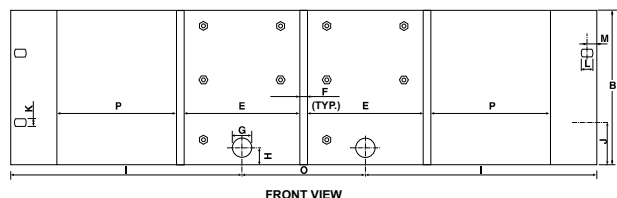
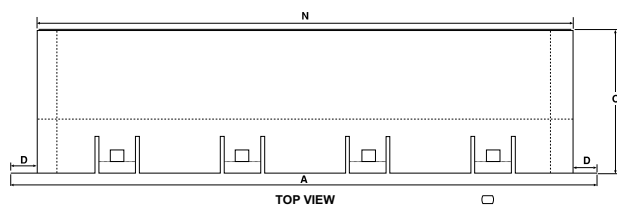


## Remote Mounting Box



Dimensions	
	in mm
A	5.5 140
B	5.9 150
C	2.75 70
D	2.36 60
E	1.75 44.5
F	1.9 48
G	0.9 23
H	0.98 25
I	1.1 27.5
J	0.65 16.5
K	0.98 25
L	0.25 6.4
M	0.05 1.6
N	0.91 23
O	1.0 26

## 19" Sub Rack



Dimensions	
	in mm
A	19 482
B	5 128
C	4.75 120
D	0.82 21
E	3.82 97.2
F	0.25 6.4
G	0.62 16
H	0.56 14
I	7.50 190
J	1.4 36
K	0.28 7
L	0.39 10
M	0.31 8
N	17.37 440
O	4 102
P	4 98.5

www.xtralis.com

The Americas +1 781 740 2223 Asia +852 2297 2438 Australia and New Zealand +61 3 9936 7000  
Continental Europe +41 55 285 99 99 UK and the Middle East +44 1442 242 330

The contents of this document are provided on an "as is" basis. No representation or warranty (either express or implied) is made as to the completeness, accuracy or reliability of the contents of this document. The manufacturer reserves the right to change designs or specifications without obligation and without further notice. Except as otherwise provided, all warranties, express or implied, including without limitation any implied warranties of merchantability and fitness for a particular purpose are expressly excluded.

This document includes registered and unregistered trademarks. All trademarks displayed are the trademarks of their respective owners. Your use of this document does not constitute or create a licence or any other right to use the name and/or trademark and/or label.

This document is subject to copyright owned by Xtralis AG ("Xtralis"). You agree not to copy, communicate to the public, adapt, distribute, transfer, sell, modify or publish any contents of this document without the express prior written consent of Xtralis.

Doc. no. 09363\_08

Part: 17874

## Specifications

Supply Voltage: 18 to 30VDC  
Power Consumption @ 24VDC:

	Module Only		In Remote Mounting Box (No relays)	
	Quiescent	With Alarm	Quiescent	With Alarm
Power	1.6W	2.2W	2.4W	3.0W
Current	60mA	80mA	90 mA	110mA

Dimensions (WHD): Mounted in Remote Box - 140 mm x 150 mm x 85 mm (5.5 in x 5.9 in x 3.4 in)

Operating Temperature: 0° to 39°C (32° to 103°F)

Humidity: 10-99% RH non-condensing

### Alarm Indicators:

High Intensity LEDs with 70 degree viewing angle

### Push Buttons Keys:

(Mode/Test, Silence/Scan, Reset, Isolate)  
Can be disabled during commissioning (except Silence). A pressed key gives a short tone when enabled and a long tone when disabled.

### Mode/Test (Dual Function):

Short press: Selects modes on the numeric display: Sensitivity, Smoke Level, and Zone Number.

For VLS displays, the First sector/pipe in alarm can be selected. Note: The current mode is indicated by the appropriate LEDs.

Long press: Activates the Test Mode

### Silence (Silence/Scan):

(Dual function on VLS only)

Short press: Silences any alarm or fault warnings.

Flashing LEDs are permanently lit until the event is cleared and the system reset. Only affects the local display.

Long press: Initiates the scanning of each pipe individually for smoke and displays the current levels.

Reset: Resets all the alarms and faults on the detector and its associated displays. If the alarm or fault condition has not been cleared then the appropriate fault indications will be repeated. Reset does not clear the isolate mode.

Isolate: Isolates the detector from any external devices or systems. This includes all the relays in the detector and in remote units. Isolate relay is activated while the detector is in isolate mode

### Fault Indicators:

System: A fault that affects the whole Xtralis VESDA system (any devices connected on VESDAnet)

Zone: A fault that affects only the assigned Xtralis VESDA detector and its associated displays.

Urgent: A serious fault that requires immediate attention. This light will only illuminate when at least one other fault light is lit.

Power: A fault with either the mains AC or battery backup power supply.

Network: A failure in the VESDAnet communications link.

Airflow: Airflow drift. Urgent indicates serious aspirator or pipe failure.

Filter: Filter needs replacing. Urgent indicates that filter replacement is overdue.

### Ordering Information

Display, in Remote Mounting Box with termination card:

Xtralis VESDA VLP	7 Relays	VRT-200
Xtralis VESDA VLP	No Relays	VRT-600
Xtralis VESDA VLS	7 Relays	VRT-400
Xtralis VESDA VLS	12 Relays	VRT-800
Xtralis VESDA VLS	No Relays	VRT-700
Xtralis VESDA VLC	7 Relays	VRT-J00
Xtralis VESDA VLC	No Relays	VRT-K00

Recessed Mounting Kit (Optional)

Configured in 19in Sub Racks contact Xtralis



VESDA®