



## Features

- Comprehensive configuration and commissioning of all Xtralis devices
- Merging and comparison of data between online & offline configurations
- Automatic detection of networked devices
- Smoke trend charts
- Real-time active event list
- Sorting and filtering of detector events
- Remote management support
- Multi-language support
- Customizable software views

## Xtralis VSC Software

Xtralis VSC configures, commissions and maintains a range of Xtralis fire systems including VESDA and ICAM smoke detectors, LCD Programmers and High Level Interfaces. VSC can configure a single Xtralis smoke detector or your entire Xtralis fire system.

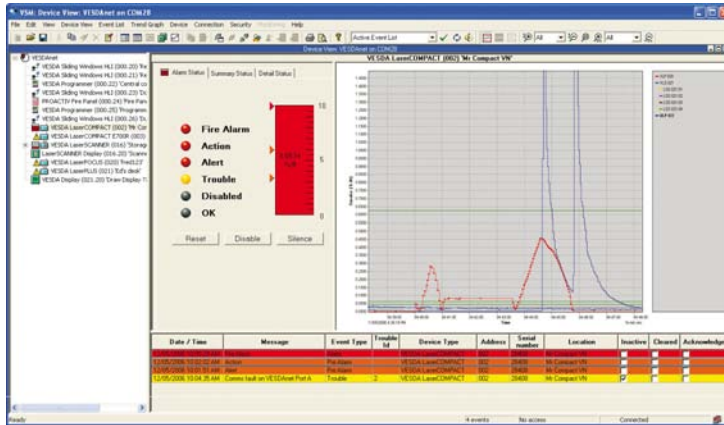
## Off-line Configuration and File Management

VSC allows you to create a system configuration without being present on-site or connected to the system. You can create an off-line configuration at your convenience and later connect and configure the system when on-site. VSC's file management enables designers to specify standardized device configuration settings according to facility management policies and email them to on-site engineers.

The comparison/merge tool enables users to immediately identify changes made between visits, create audit reports, or revert to previously agreed configurations.

## Remote Management

VSC allows you to access your Xtralis fire system remotely via a range of networking options. This means you could be in your own office at a different site, and remotely manage or troubleshoot your Xtralis fire system.



### Automatic discovery of network devices

All Xtralis VESDA and ICAM devices connected to VSC are automatically detected. Unconfigured devices are easily and uniquely identified, enabling easy incorporation into the configuration and providing savings in time and effort when setting up your network.

### Multiple device commands

You can use VSC to select several devices and perform an action (for example, Reset) on multiple devices. This saves you time when commissioning and managing your networks.

### Smoke trend charts

VSC enables straightforward comparisons of smoke trends between multiple detectors by the ability to plot smoke trends from different detectors on one chart. Comparing smoke trend charts makes it easier to analyze and report on smoke events.

### Event log filtering

VSC includes an event log filtering feature. This feature sorts detector events according to your preferred criteria such as the time the event occurred or the type of a particular event. This allows you to quickly investigate incidents and identify the source and frequency of your network events.

### Real-time active event list

VSC's powerful real-time active event list helps simplify commissioning, maintenance and troubleshooting of your Xtralis fire system.

### View management

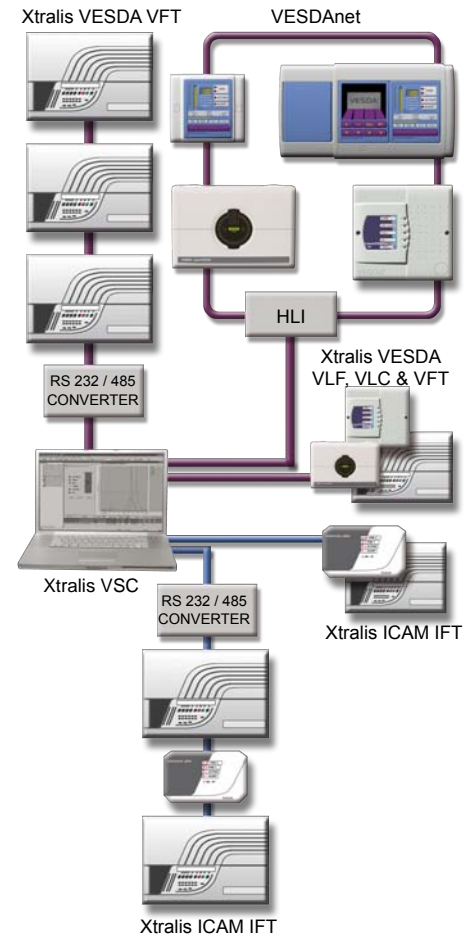
Multiple Views for entire network management allows simultaneous display of an overview of the network and several other windows displaying information about elements of the network. For example, an active event list and a mimic display of one of the detectors.

### Multi-language support and translation

VSC allows you to configure and maintain your Xtralis fire system in your local language, and then send your data files to someone to view in a different language. VSC will automatically translate your file into the language of your choice.

### Comprehensive Help topics

VSC's context-sensitive Help provides explanatory information to aid with configuring and troubleshooting your Xtralis fire system.



VSC provides local or remote connection to:

- Xtralis VESDA VLF, VLC, VFT and ICAM IFT detectors via RS232
- Multiple VESDA devices on a VESDAnet via a High Level Interface (HLI)
- Multiple Xtralis ICAM IFT or VESDA VFT detectors on a Modbus RS485 connection via a RS232 / RS485 converter
- Xtralis ICAM IFT or VESDA VFT detectors via Modbus TCP/IP

### Computer requirements

OS	Windows 2000, XP or Vista™
Processor	Minimum: 1 GHz 32-bit (x86) or 64-bit (x64)
Memory	Preferred: 1 GB Minimum: 512 MB
Hard Disk	Minimum: 200 MB Free
Display	Single Monitor, Graphics Card with 128 MB memory

www.xtralis.com

The Americas +1 781 740 2223 Asia +852 2916 8894 Australia and New Zealand +61 3 9936 7000  
Continental Europe +32 56 24 19 51 UK and the Middle East +44 1442 242 330

The contents of this document are provided on an "as is" basis. No representation or warranty (either express or implied) is made as to the completeness, accuracy or reliability of the contents of this document. The manufacturer reserves the right to change designs or specifications without obligation and without further notice. Except as otherwise provided, all warranties, express or implied, including without limitation any implied warranties of merchantability and fitness for a particular purpose are expressly excluded.  
This document includes registered and unregistered trademarks. All trademarks displayed are the trademarks of their respective owners. Your use of this document does not constitute or create a licence or any other right to use the name and/or trademark and/or label.  
This document is subject to copyright owned by Xtralis AG ("Xtralis"). You agree not to copy, communicate to the public, adapt, distribute, transfer, sell, modify or publish any contents of this document without the express prior written consent of Xtralis.  
Document: 12331\_06